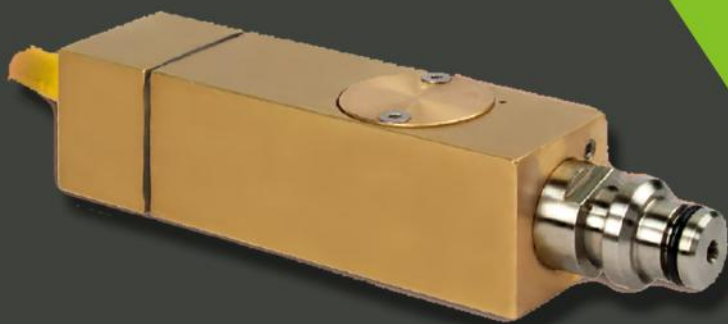


RCC-2

Pressure sensor with
flexible setpoint



Signalling the pressure
values of the medium
in hydraulic systems
of machines
operating in
mining
excavations

- adapted to work in difficult conditions in the underground mines
- signalling the exceed pressure value of the medium in hydraulic systems of machines
- quick and easy change to pressure setups
- measuring range 0.1 ÷ 45 MPa



RCC-2

Pressure sensor with
flexible setpoint

TECHNICAL DATA

✓ Pressure measurement	0,1 ... 45 MPa
- measuring range	60 MPa
- maximum pressure	1%
- accuracy of threshold pressure setup	5 ÷ 10% of the set threshold pressure
- hysteresis	
✓ Electrical parameters	
- admissible input parameters	$U_i = 30 \text{ V DC}$, $I_i = 2 \text{ A}$, $L_i = 7 \mu\text{H}$
- output signal	switchable contact 2 A/30 V or contact-switchable resistance, according to the client's requirement
- connecting resistance of the connection	5×10^5 cycles
✓ Working conditions	
- working temperature	+5°C ÷ +60°C
- medium	oil, oil-in-water emulsion
✓ Mechanical parameters	
- overall dimensions	Ø30 x 135 mm
- weight	about 0,5 kg
- casing protection degree	IP 65
- cable length	according to client's requirements, max. 10 m
- process connection	Stecko DN10, metric thread or unified, screw thread, optionally gland

The RCC-2 pressure sensor with flexible setpoint has been designed to signal the exceeded pressure values of the medium supplying hydraulic systems of machines and devices.
The setup of threshold pressure value is performed by means of an initial spring tension mechanism.

Anti-explosion structure



I M1 Ex ia I Ma

CE-type examination certificate

KDB 08ATEX102

Conformity mark **CE**